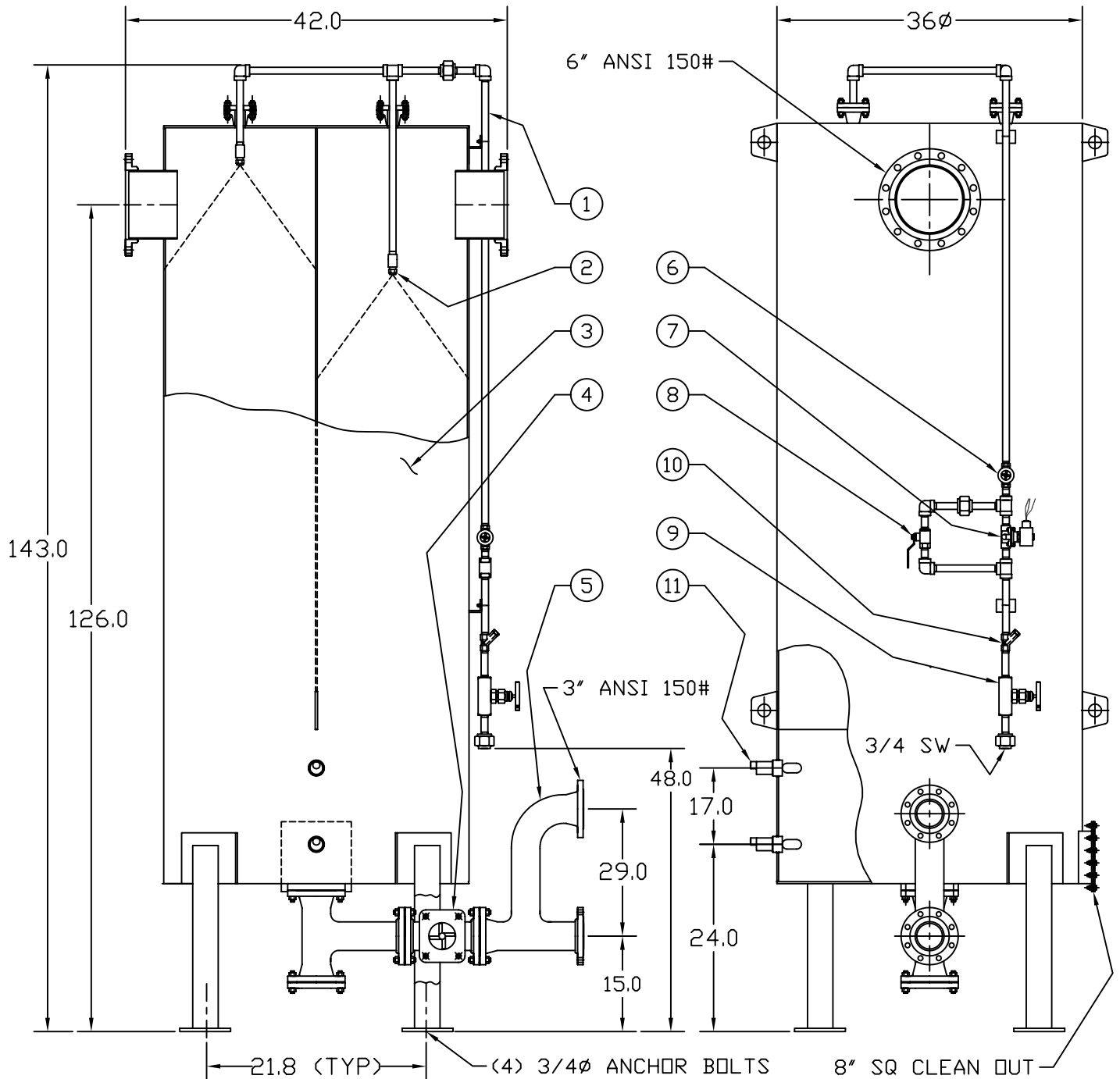


6" MODEL 8600  
FOAM SEPARATOR



TAGS AND SPECIFICATIONS

APPROX. WEIGHT  
850 LB  
MAWP  
1 PSI  
MAX OPERATING PR  
20 IN WC  
MIN OPERATING PR  
3 IN WC



GROTH CORPORATION  
HOUSTON, TEXAS

CERTIFIED

DWG. NO. C-91054-06

REVISION: 0

DATE: 6-8-00

**BILL OF MATERIALS**  
**FOAM SEPARATOR**  
**8600-XX-5-1110**

**DWG NO 91054**

BOM NO. 91054005.DOC

REV \_\_\_\_\_ APPROVED \_\_\_\_\_ DATE \_\_\_\_\_

| ITEM | QTY | DESCRIPTION   | MATERIAL |
|------|-----|---|----------|
| 1    | 1   | WATER SPRAY PIPING SYSTEM<br>3/4" SCHEDULE 40                               | 316 SS   |
| 2    | 4   | SPRAY NOZZLES   | 316 SS   |
| 3    | 1   | FOAM SEPARATOR TANK<br>MAWP 1.0 PSIG  | 316L SS  |
| 4    | 1   | FLOW INDICATOR, WATER DRAIN   | 316 SS   |
| 5    | 1   | WATER DISCHARGE PIPING SYSTEM   | 316 SS   |
| 6    | 1   | FLOW INDICATOR, WATER SPRAY, 3/4"   | 316 SS   |
| 7    | 1   | VALVE, SOLENOID OPERATED, 3/4", EXPLOSION PROOF                             | BRASS    |
| 8    | 1   | VALVE, MANUAL BY-PASS, 3/4"   | BRASS    |
| 9    | 1   | VALVE, FLOW REGULATING, 3/4"  | BRASS    |
| 10   | 1   | STRAINER, WATER, 3/4"   | BRASS    |
| 11   | 2   | WATER LEVEL SWITCH, SPDT, 10 AMP CONTACTS<br>NEMA 7 EXPLOSION PROOF HOUSING | 316 SS   |