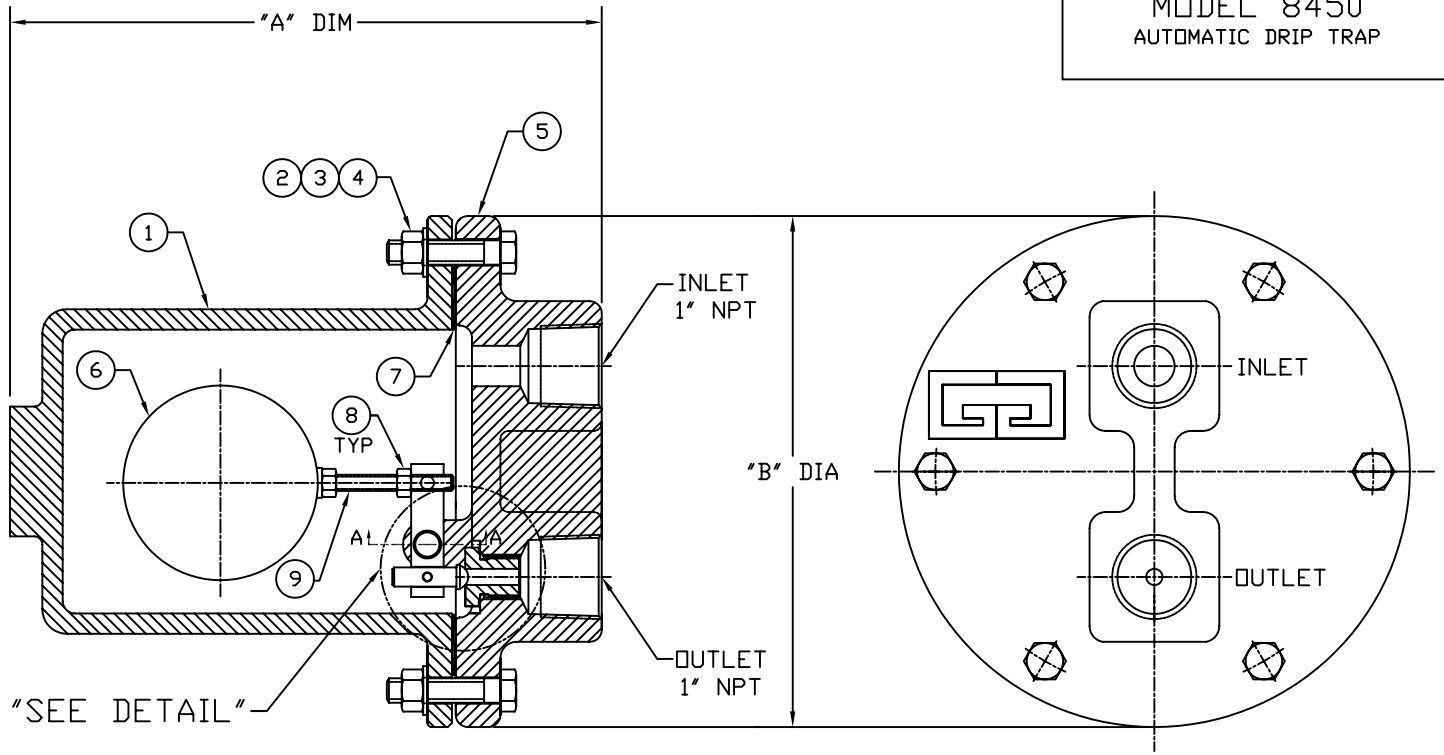
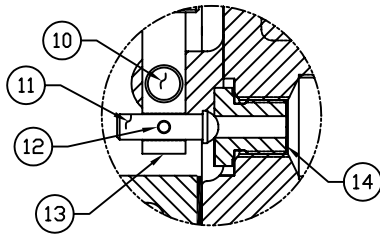


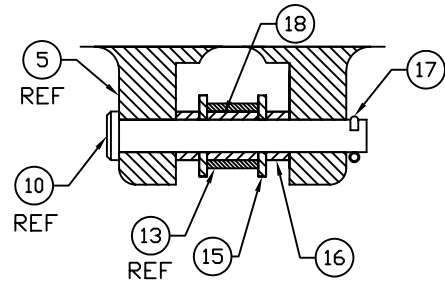
MODEL 8450  
AUTOMATIC DRIP TRAP



DETAIL



SECTION A-A  
SCALE 2X



SIZE	A	B
1.2 QT	9.50 (241.3)	7.88 (200.1)

DIMENSIONS IN PARENTHESIS ARE IN MILLIMETERS.

TAGS AND SPECIFICATIONS

REV	DATE	BY	ECN No.
A	01-20-95	ESQ	ECN# 950007



GROTH CORPORATION  
HOUSTON, TEXAS

CERTIFIED

DWG. NO. C-85052

REVISION: A

DATE: 01/20/95

**GROTH MODEL 8450 Automatic Drip Trap**  
**8450-1-1-NOO**  
**Ref Dwg C-85052**

ITEM	QTY	DESCRIPTION	MATERIAL	PART No.	SPEC.	RSP
1	1	Bowl, 8450, 1.5 Qt. Capacity	Aluminum	10003001	ASTM A 356	
2	6	Bolt, Hex, 3/8"-16 UNC x 1.5" Lg.	SS	88106123		
3	6	Washer, Lock, 3/8"	SS	88000640		
4	6	Nut, Hex, 3/8"-16 UNC	SS	88000606		
5	1	Cover, 8450	Aluminum	10002001	ASTM A 356	
6	1	Float, 1.5 Qty. Body	304 SS	10105004	ASTM A 240	
7	1	Gasket, Cover	Buna-N	10008001		✓
8	2	Nut, Hex, 1/4"-20 UNC	SS	88000010		
9	1	Threaded Rod, 1/4"-20 UNC	304 SS	10007004	ASTM A 276	
10	1	Clevis Pin, 8450	304 SS	10115001	ASTM A 276	
11	1	Plunger, 8450	304 SS	10006004	ASTM A 276	✓
12	1	Roll Pin, 1/8" OD x 0.75" Lg.	SS	88204068		
13	1	Pivot Arm, 8450	304 SS	10005004	ASTM A 276	
14	1	Bushing, 8450	304 SS	10004004	ASTM A 276	✓
15	2	Bearing, Washer	PTFE	10104003		
16	2	Bearing, Clevis Pin	PTFE	10104001		
17	1	Cotter Pin, 1/16" x 1" Lg.	SS	88401064		
18	1	Bearing, Pivot Arm	PTFE	10104002		

**Note:**

1.) RSP = RECOMMENDED SPARE PARTS