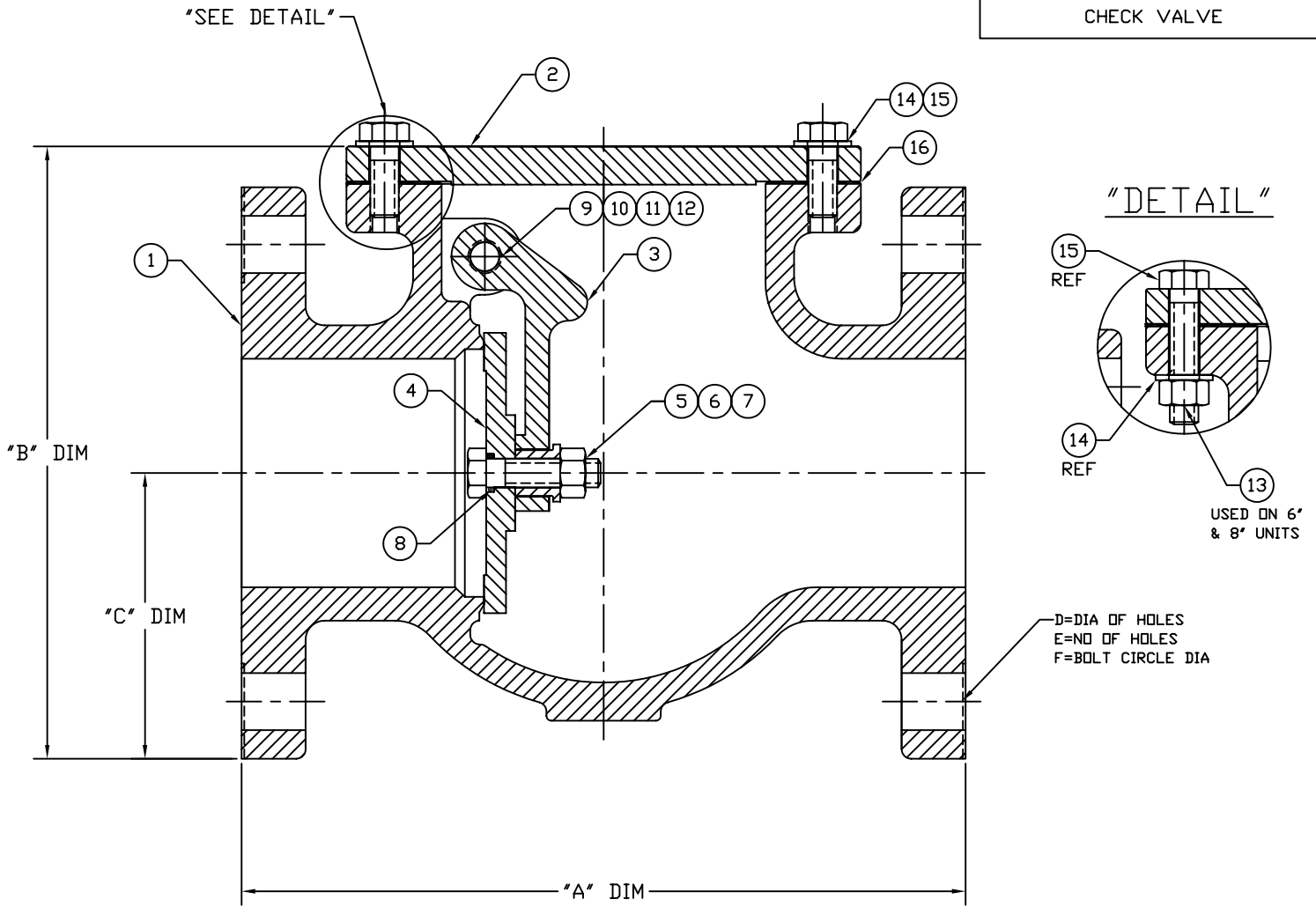


MODEL 8110
BACK PRESSURE
CHECK VALVE



SIZE	FLANGE DRILLING	A	B	C	D	E	F
2"	150 LB	8.00 (203.2)	8.13 (206.5)	3.00 (76.2)	.75 (19)	4	4.75 (120.6)
3"	150 LB	9.50 (241.3)	10.50 (266.7)	3.75 (95.2)	.75 (19)	4	6.00 (152.4)
4"	150 LB	11.50 (292.1)	11.50 (292.1)	4.50 (114.3)	.75 (19)	8	7.50 (190.5)
6"	150 LB	14.00 (355.6)	13.50 (342.9)	5.50 (139.7)	.88 (22.2)	8	9.50 (241.3)
8"	150 LB	19.50 (495.3)	16.50 (419.1)	6.75 (171.4)	.88 (22.2)	8	11.75 (298.4)

DIMENSIONS IN PARENTHESIS ARE IN MILLIMETERS.

TAGS AND SPECIFICATIONS



GROTH CORPORATION
HOUSTON, TEXAS

CERTIFIED

DWG. NO. C-85616

REVISION:

DATE:

BILL OF MATERIALS

CHECK VALVE

8110-03-1-FOZ

DWG NO 85616

BOM NO. 85616BOM.doc, PAGE 1

REV _____ APPROVED _____ DATE _____

ITEM	QTY	DESCRIPTION	MATERIAL	PART NO	DWG NO
1	1	BODY	ASTM B26 GR 356 T6	10168001	10168
2	1	COVER	ASTM B26 GR 356 T6	10156001	10156
3	1	PIVOT ARM	ASTM B26 GR 356 T6	10155001	10155
4	1	PALLET	ASTM B26 GR 356 T6	10157001	10157
5	2	NUT, HEX, JAM , 3/8-24UNF	ASTM A194 GR 2H		---
6	1	BUSHING	ASTM A 276 304HR	10135001	10135
7	1	BOLT, HEX, 3/8-24UNF, 1.5 LONG	ASTM A193 GR B7		---
8	1	O-RING, #012	BUNA-N	89102012	---
9	2	WASHER, FLAT, 3/8	ASTM F844		---
10	1	PIN	ASTM A 276	10119002	10119
11	2	PLUG, PIPE, HEX HD, 1/4 NPT(M)	ASTM A105		---
12	---	NOT REQUIRED FOR THIS ASSEMBLY	---	---	---
13		NOT REQUIRED FOR THIS ASSEMBLY	---	---	---
14	---	NOT REQUIRED FOR THIS ASSEMBLY	---	---	---
15	6	BOLT, HEX, 3/8-24UNF, 1.25 LONG	ASTM A193 GR B7	NEW #	---
16	1	GASKET	BUNA-N	10163001	10163